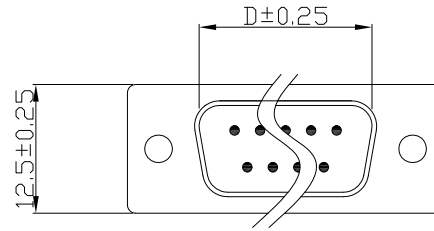


CUST. MODEL:	REF:
CUST. P/N:	DWG FILE:

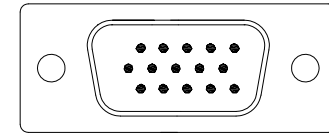
DESCRIPTION CONTROL			
REV.	DESC.	DATE.	APP.
1.0			

SPECIFICATION:

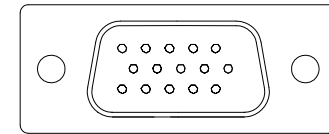
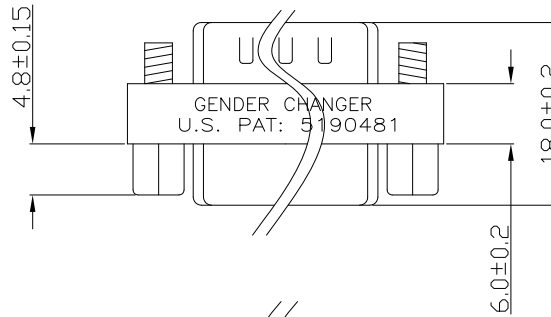
1. VOLTAGE RATING: 300VAG(rms).
2. CURRENT RATING: 3 AMP CONTINUOUS
3. DIELECTRIC STRENGTH 1000VAC
4. CONTACT RESISTANCE: 10 M Ohm min
5. INSULATION RESISTANCE: 5000 M Ohm min



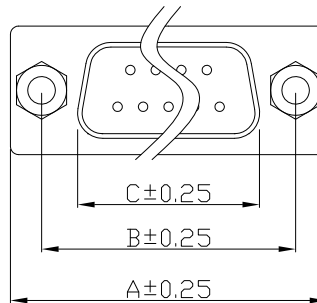
**D-SUB 9.15.25.37 PIN
(MALE)**



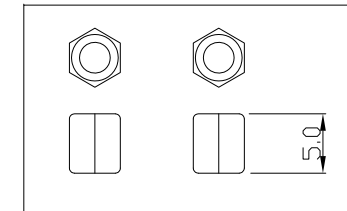
HD-15 PIN MALE



HD-15 PIN FEMALE



**D-SUB 9.15.25.37 PIN
(FEMALE)**



NUT

GC003-□□□□□□

No. OF PINS:
09: 9PIN
15: 15PIN
25: 25PIN
37: 37PIN
HD: HD15PIN

Contact type:
C:Female/Male

Contact:
1:Gold flash
2:15u" Gold on contact
3:30u" Gold on contact
4:Selective Gold (full Gold)

NUT:
0:WITHOUT NUT
1:#4-40 NUT(5.0mm)
2:M3 NUT(5.0mm)
3:M2.6 NUT(5.0mm)

Flange Mounting Option:
0: 3.05mm clear hole
1: #4-40 threaded hole
2: #4-40 threaded hole with #4-40 unc screwlock installed
3: M3 threaded hole
4: M3 threaded hole with M3 screwlock installed
5: M2.6 threaded hole
6: M2.6 threaded hole with M2.6 screwlock installed

Positions	A	B	C	D
9	30.81	24.99	16.92	16.33
15	39.14	33.32	25.50	24.66
25	53.04	47.04	38.96	38.38
37	69.32	63.50	55.42	54.84
HD15	30.81	24.99	16.92	16.33

UNLESS OTHERWISE SPECIFIED SURFACE FINISH ALL OVER TOLERANCES mm

METRIC

- X. = ±0.5
- .X = ±0.30
- .XX = ±0.25
- .XXX = ±0.15

DRAW:	DATE:
BEN	07/17/06
CHECK:	APPROVE:
KEVIN	TONY

TITLE:	MINI GC CONN
MODEL CODE:	GC003-XXCXXX
 誠州電子有限公司 Sincere State Electronics Co.,Ltd.	

NO.	DESCRIPTION	QTY
-----	-------------	-----