

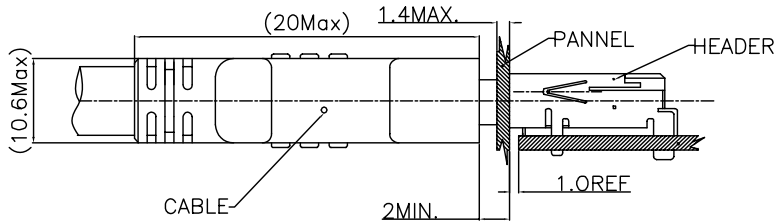
CUST. MODEL:	REF.
CUST. P/N	DWG FILE:

DESCRIPTION CONTROL			
REV.	DESC.	DATE	APP.

RoHS Compliance

PLATING:

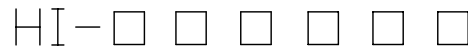
Contact: Gold Over Plated Underplate Terminal Area,
 100u" Min Tin Over Plated Solder Tail Area 50u"
 Min Nickel Underplate
 Shielding: 100u" Tin Min Over 50u" Nickel Plated



REFERENCE MOUNT DIMENSION

TABLE 1

6	Shell(Front)	ZINC ALLOY	1 Pcs
5	Contact(S)	P/B C5191 E-H	19 Pcs
4	Base	LCP	1 Pcs
3	Cover(3)	LCP	1 Pcs
2	Cover(2)	LCP	1 Pcs
1	Cover(1)	LCP	1 Pcs
NO	PART NAME	PART Material	Quantity



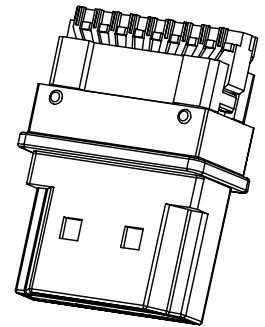
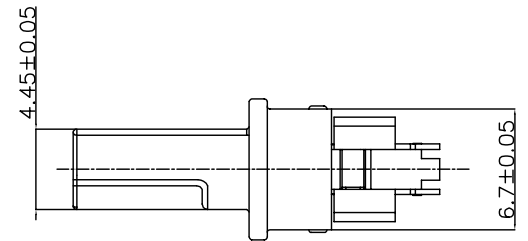
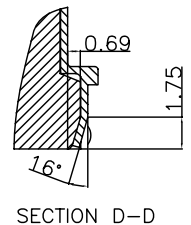
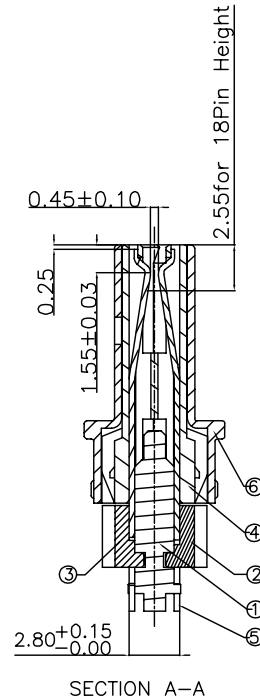
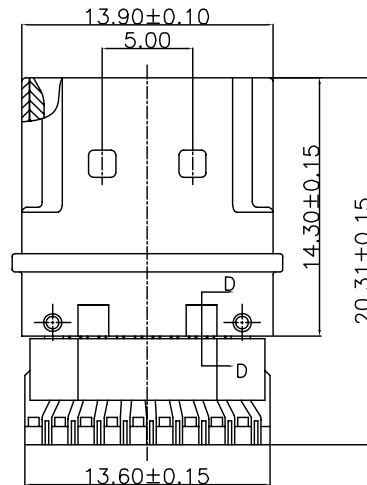
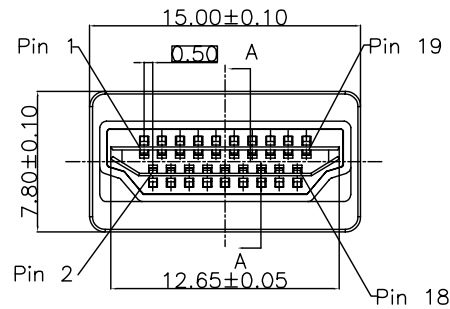
Contact type:
1:Male,2:Female

No. OF PINS:
19,29

Board Mount Type
1:Solder Type
2:90° SMT
3:Vertical SMT
4:Vertical DIP
5:90° DIP

Contact:
1:Gold flash and Tinned Tail
2:15u" Gold on contact
3:30u" Gold on contact
4:Selective Gold (full Gold)

Flange Mounting Option:
0: Blank No Ear No Thread
1: Ear With M3 thread
2: Ear With #4-40 unc thread
3: Ear With Clear Hole



UNLESS OTHERWISE SPECIFIED SURFACE FINISH ALL OVER TOLERANCES mm METRIC .X = ±0.38 .XX = ±0.25	DRAW:	DATE:	TITLE:
	CHUBBY	03/02/05	HDMI 19P Plug Solder Type
	CHECK:	APPROVE:	MODEL CODE:
	KEVIN	TONY	HI-21910X
			誠州電子有限公司 <i>Sincere State Electronics Co.,Ltd.</i>

NO	DESCRIPTION	QTY
----	-------------	-----