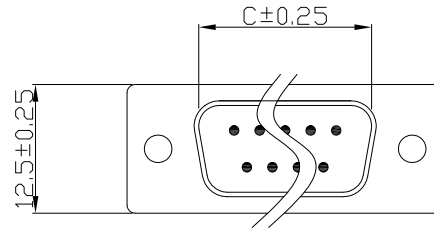


CUST. MODEL:	REF:
CUST. P/N:	DWG FILE:

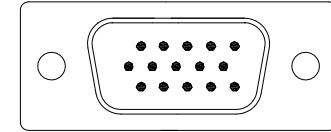
DESCRIPTION CONTROL			
REV.	DESC.	DATE.	APP.
1.0			

**SPECIFICATION:**

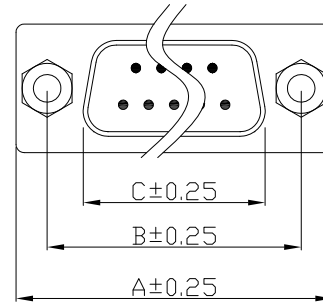
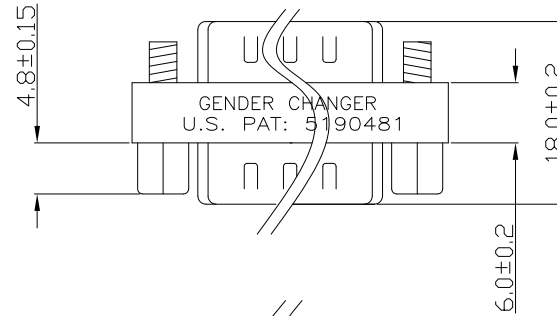
1. VOLTAGE RATING: 300VAG(rms).
2. CURRENT RATING: 3 AMP CONTINUOUS
3. DIELECTRIC STRENGTH 1000VAC
4. CONTACT RESISTANCE: 10 M Ohm min
5. INSULATION RESISTANCE: 5000 M Ohm min



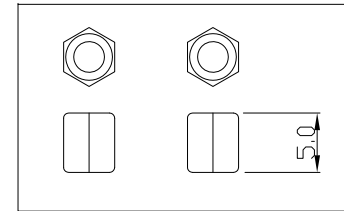
**D-SUB 9.15.25.37 PIN  
(MALE)**



**HD-15 PIN MALE**



**D-SUB 9.15.25.37 PIN  
(MALE)**



**NUT**

GC001- □ □ □ □ □ □

No. OF PINS:  
09: 9PIN  
15: 15PIN  
25: 25PIN  
37: 37PIN  
HD: HD15PIN

Contact type:  
A:Male/Male

Contact:  
1:Gold flash  
2:15u" Gold on contact  
3:30u" Gold on contact  
4:Selective Gold (full Gold)

NUT:  
0:WITHOUT NUT  
1:#4-40 NUT<5.0mm>  
2:M3 NUT<5.0mm>  
3:M2.6 NUT<5.0mm>

Flange Mounting Option:  
0: 3.05mm clear hole  
1: #4-40 threaded hole  
2: #4-40 threaded hole with #4-40 unc screwlock installed  
3: M3 threaded hole  
4: M3 threaded hole with M3 screwlock installed  
5: M2.6 threaded hole  
6: M2.6 threaded hole with M2.6 screwlock installed

Positions	A	B	C
9	30.81	24.99	16.33
15	39.14	33.32	24.66
25	53.04	47.04	38.38
37	69.32	63.50	54.84
HD15	30.81	24.99	16.33

UNLESS OTHERWISE SPECIFIED SURFACE FINISH ALL OVER TOLERANCES mm

**METRIC**

- X. = ±0.5
- .X = ±0.30
- .XX = ±0.25
- .XXX = ±0.15

DRAW:	DATE:
BEN	07/17/06
CHECK:	APPROVE:
KEVIN	TONY

TITLE:	<b>MINI GC CONN</b>
MODEL CODE:	<b>GC001-XXAXXX</b>



**誠州電子有限公司**

Sincere State Electronics Co.,Ltd.

NO.	DESCRIPTION	QTY
-----	-------------	-----