

CUST. MODEL:	REF.
CUST. P/N	DWG FILE:

DESCRIPTION CONTROL			
REV.	DESC.	DATE	APP.

SPECIFICATIONS

Current Rating:

1.0A MAX

Voltage rating:

30V AC (rms)

Insulator Resistance:

1000 Megohms min.

Contact Resistance:

20 m ohms max.

Dielectric withstanding:

AC 750V/minute

Temperature Range:

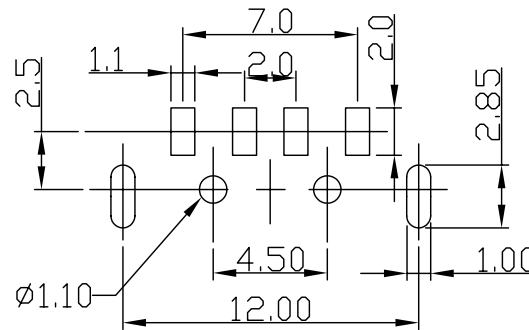
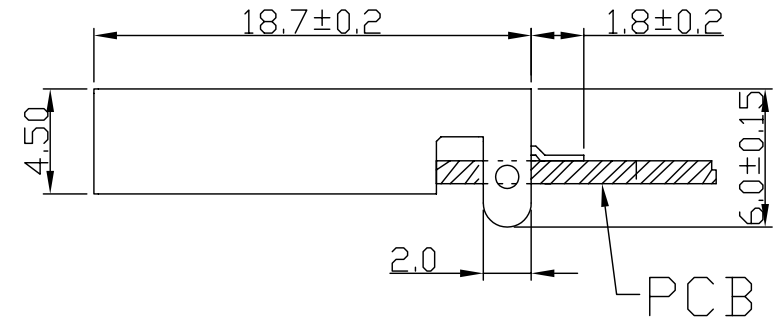
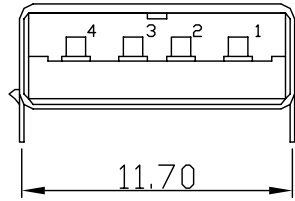
-40°C to +105°C

Insulator:

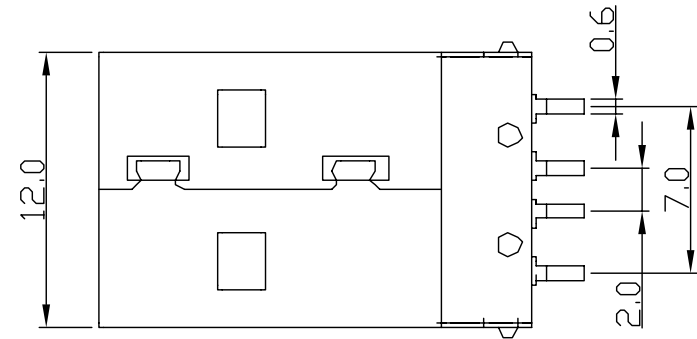
High Temp. Plastic
(Nylon6T UL94V-0)

Contact: Copper Alloy

Plating: Selective Gold plated



P. C. B. LAYOUT



U560 □ - □ □ □ □ □ - □ □ □ □

A: A Type
B: B Type
C: 1394

No. OF PINS:

S10: Single port 90°
S15: Single port 180°
S20: Dual port 90°
S30: SMT

Gold Thickness
00: None
03: 3u"
05: 5u"
10: 10u"

Plating Material
G: Full Gold Plated
T: Full Tin Plated
P: Gold Plated & Tinned Tail

UNLESS OTHERWISE SPECIFIED SURFACE FINISH ALL OVER TOLERANCES mm METRIC X. = ±0.38 .X = ±0.25 .XX = ±0.13	DRAW: Chubby CHECK: Kevin	DATE: 12/16/06 APPROVE: Tony	TITLE: USB A Type Male SMD Type MODEL CODE: U560A-04S30-00G
			<p>誠州電子有限公司 Sincere State Electronics Co.,Ltd.</p>
	NO. DESCRIPTION QTY		